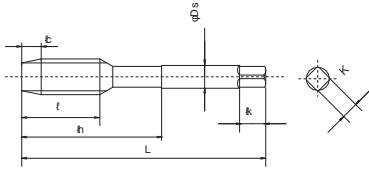


# Taro xoắn TIN-SFT



Unit:mm

EDP NO.	Thread Size	TAP Limit	φc	L	φ	φn	Ds	Flutes	External Centre	Stock			
10900	M 1.4 × 0.3	OH1	2.5P	34	9	11.5	3	2	—	D			
10901	M 1.6 × 0.35			36	10	13.5	3		—				
10902	M 1.7 × 0.35			36	11	13.5	3		—				
10903	M 2 × 0.4			40	2.8	16	3		—				
10905	M 2.3 × 0.4			42	2.8	16	3		—				
10907	M 2.5 × 0.45			44	3.2	16	3		—				
10909	M 2.6 × 0.45			44	3.2	16	3		—				
10911	M 3 × 0.5			46	3.5	19	4		—		B		
10912	M 3.5 × 0.6			48	4.2	20	4		有		D		
10913		OH1				有							
10914	M 4 × 0.7	OH2	2.5P	52	4.9	21	5	3	有	B			
10917	M 5 × 0.8			60	5.6	24	5.5		有				
10919	M 5 × 0.5			60	5.6	24	5.5		有		D		
10920	M 6 × 1			62	7	29	6		有		B		
10921	M 6 × 0.75			62	7	29	6		有		D		
10922	M 7 × 1			65	7	33	6.2		—		D		
10923	M 8 × 1.25			OH3		70	8.5		37		6.2	—	B
10924	M 8 × 1			OH2		70	8.5		37		6.2	—	D
10926	M 10 × 1.5			OH3		75	10.5		41		7	—	B
10929	M 10 × 1.25	OH3		75	10.5	41	7	—	B				
10930	M 10 × 1	OH2		75	10.5	41	7	—	D				
10931	M 10 × 0.75	OH2		75	10.5	41	7	—	D				
10932	M 12 × 1.75	OH3		82	12	48	8.5	—	B				
10935	M 12 × 1.5	OH3		82	12	48	8.5	—	B				

EDP NO.	Thread Size	TAP Limit	φc	L	φ	φn	Ds	Flutes	Centre	Stock
10938	M12 × 1.25	OH3	2.5P	82	12	48	8.	3	—	B
10939	M12 × 1	OH2		82	12	48	8.		—	
10945	M14 × 2	OH3		88	14	48	10.		—	
10947	M14 × 1.5			88	14	48	10.		—	
10951	M16 × 2			95	14	52	12.		—	
10953	M16 × 1.5			95	14	52	12.		—	
10957	M18 × 2.5			100	17.5	55	14		—	
10959	M18 × 1.5			100	17.5	55	14		—	
10963	M20 × 2.5			105	17.5	58	15		—	
10965	M20 × 1.5		105	17.5	58	15	—			
10969	M22 × 2.5		OH4	115	17.5	63	17	—		
10971	M22 × 1.5	OH3	115	17.5	63	17	—	D		
10975	M24 × 3	OH4	120	21	66	19	—			
10977	M24 × 1.5	OH3	120	21	66	19	—			
10979	M27 × 3	OH4	130	21	71	20	—			
10981	M27 × 1.5	OH3	130	21	71	20	—			
10983	M30 × 3.5	OH4	135	24.5	74	23	—			
10985	M30 × 1.5	OH3	135	24.5	74	23	—			
10987	M33 × 3.5	OH4	145	24.5	77	25	—			
10989	M33 × 1.5	OH3	110	24.5	47	25	—			
10991	M36 × 4	OH4	155	28	82	28	—			
10993	M36 × 1.5	OH3	110	28	49	28	—			
10995	M42 × 4.5	OH4	175	31.5	93	32	—			
10997	M42 × 1.5	OH3	120	31.5	49	32	—			

Low Carbon Steels	Medium Carbon Steels	High Carbon Steels	Alloy Steels	Hardened Steels			Stainless Steels	Tool Steels	Cast Steels	Cast Iron	Ductile Cast Iron	Copper	Brass	Brass Casting	Bronze	Aluminum Rolled	Aluminum Alloy Casting	Magnesium Alloy Casting	Zinc Alloy Casting	Titanium Alloys	Nickel Alloys	Thermo Setting Plastic	Thermo Plastic
C ~0.25%	C0.25%~0.45%	C 0.45%~	SCM	25~45 HRC	45~55 HRC	50~60 HRC	SUS	SKD	SC	FC	FCD	Cu	Bs	BsC	PB	AL	AC,ADC	MC	ZDC				
○	○	○	○				○	○	○		○	○	○	○	○	○	○	○	○	○			○

A, B, C, D=Standard stock item.