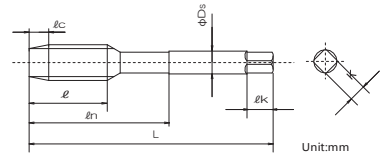


# Taro xoắn EX-H-SFT



EDP NO.	Thread Size	TAPLimit	$\phi c$	L	$\phi$	$\phi r_1$	Ds	Flutes	External Centre	Stock						
18590	M 1 × 0.25	OH1	2.5P	30	7	—	3	2	—	D						
18592	M 1.2 × 0.25			32	8	—	3		—							
18594	M 1.4 × 0.3			34	9	—	3		—							
18596	M 1.6 × 0.35			36	10	—	3		—							
18598	M 1.7 × 0.35			36	11	—	3		—							
18602	M 2 × 0.4			40	12	—	3		—							
18604	M 2.3 × 0.4			42	13	—	3		—							
18606	M 2.5 × 0.45			44	14	—	3		—							
18608	M 2.6 × 0.45			44	14	—	3		—							
18612	M 3 × 0.5			OH2	2.5P	46	11		19		4	3	—	B		
18613	OH3	—														
18614	OH1	—														
18615	OH2	—														
18616	M 3.5 × 0.6	48	13	20		4	有									
18617	M 4 × 0.7	OH2	52	13		21	5	有								
18617	OH3	—														
18620	M 5 × 0.8	OH2	3	60		16	24	5.5	4	有	D					
18621	OH3	—														
18624	M 6 × 1	OH2		62		19	29	6		有						
18625	OH3	—														
18628	M 8 × 1.25	OH2		3	70	22	37	6.2		4		—	B			
18629	OH3	—														
18630	M 8 × 1	OH2			70	22	37	6.2				—				
18632	M 10 × 1.5	—			3P	75	24	41				7		4	—	D
18633	OH3	—														
18634	M 10 × 1.25	OH2				75	24	41				7			—	
18636	OH3	—														
18637	M10 × 1	—	75			24	41	7	—							
18638	M 12 × 1.75	OH2	82			29	48	8.5	—							

EDP NO.	Thread Size	TAPLimit	$\phi c$	L	$\phi$	$\phi r_1$	Ds	Flutes	External Centre	Stock
18639	M12 × 1.75	OH3	2.5P	82	29	48	8.5	3	—	B
18640	M12 × 1.5	OH2		—						
18641	OH3	—								
18642	M12 × 1.25	OH2		82	29	48	8.5		—	
18643	OH3	—								
18644	M12 × 1	OH2		82	29	48	8.5		—	
18649	M14 × 2			88	30	48	10.5		—	
18651	M14 × 1.5			88	30	48	10.5		—	
18655	M16 × 2			95	32	52	12.5		—	
18657	M16 × 1.5			95	32	52	12.5		—	
18661	M18 × 2.5		OH3	100	37	55	14	—		
18663	M18 × 1.5		OH2	100	37	55	14	—		
18667	M20 × 2.5		OH3	105	37	58	15	—		
18669	M20 × 1.5		OH2	105	37	58	15	—		
18673	M22 × 2.5		OH3	3P	115	38	63	17	4	—
18675	M22 × 1.5	OH2	115		38	63	17	—		
18679	M24 × 3	OH3	120		45	66	19	—		
18681	M24 × 1.5	OH2	120		45	66	19	—		
18685	M27 × 3	OH3	130		45	71	20	—		
18687	M27 × 1.5	OH2	130		45	71	20	—		
18691	M30 × 3.5	OH3	135		48	74	23	—		
18693	M30 × 1.5	OH2	135		48	74	23	—		
18695	M33 × 3.5	OH3	145		51	77	25	—		
18697	M33 × 1.5		110		37	47	25	—		
18699	M36 × 4		OH4	155	57	82	28	—		
18763	M36 × 1.5		OH3	110	39	49	28	—		
18765	M42 × 4.5		OH4	175	60	93	32	—		
18767	M42 × 1.5		OH3	120	39	49	32	—		

Low Carbon Steels	Medium Carbon Steels	High Carbon Steels	Alloy Steels	Hardened Steels			Stainless Steels	Tool Steels	Cast Steels	Cast Iron	Ductile Cast Iron	Copper	Brass	Brass Casting	Bronze	Aluminum Rolled	Aluminum Alloy Casting	Magnesium Alloy Casting	Zinc Alloy Casting	Titanium Alloys	Nickel Alloys	Thermo Setting Plastic	Thermo Plastic
C ~0.25%	C0.25% ~0.45%	C 0.45%~	SCM	25~45 HRC	45~55 HRC	50~60 HRC	SUS	SKD	SC	FC	FCD	Cu	Bs	BsC	PB	AL	AC,ADC	MC	ZDC				
○	○																						○

○: Good